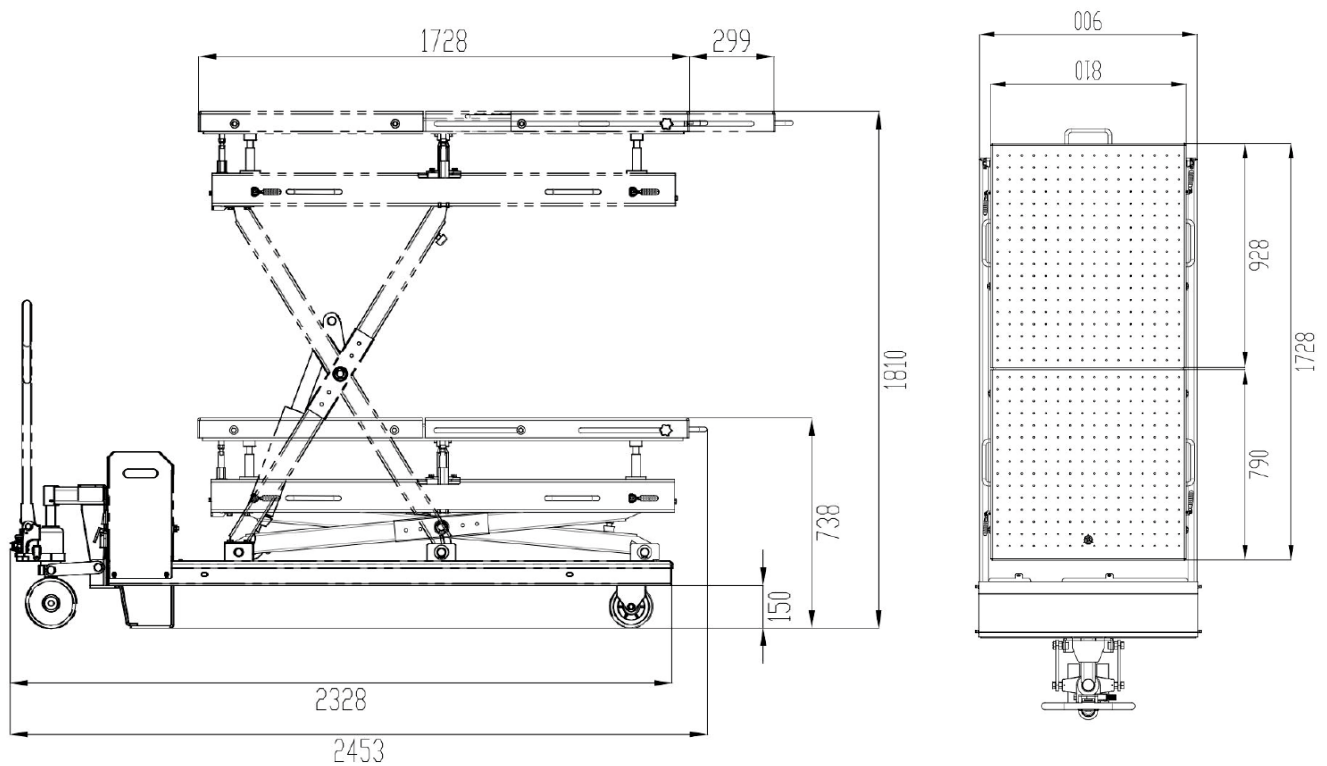




WLB15B

CAPACITY:	1500 kg
POWER SUPPLY:	230V/50Hz
MOTOR POWER:	1,5kW
LIFTING HEIGHT:	738-1810 mm
PLATFORMS:	810 x 1728 mm
NOISE LEVEL:	<70 dB (A)
WEIGHT:	400 kg

WLB15B is uniquely designed for removal and installation of electric vehicle batteries. This product can also be used for removal and installation of various other components, such as: engines, transaxles, fuel tanks, suspensions, cradles, chassis system components, and future powertrains.



OPTIONAL ACCESSORIES



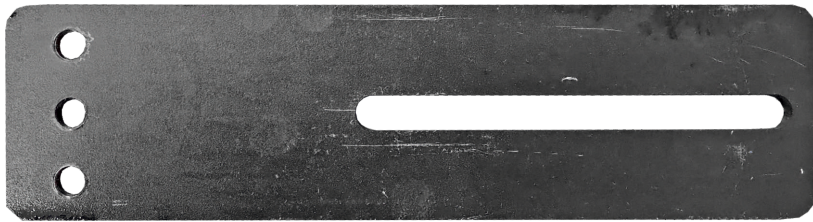
MOUNTING SUPPORT A1
4X



MOUNTING SUPPORT A2
4X



BOTTOM PLATE A2
10X



BOTTOM PLATE A1
2X



SCREW ASSEMBLY A1
2X



SCREW ASSEMBLY A2
18X



TAPERING JOINT ASSEMBLY A1
10X



TAPERING JOINT ASSEMBLY A2
2X



TAPERING JOINT ASSEMBLY A3
6X



COLUMN ASSEMBLY SUPPORTING A6
2X



COLUMN ASSEMBLY SUPPORTING A7
2X



COLUMN ASSEMBLY SUPPORTING A1
2X



COLUMN ASSEMBLY SUPPORTING A5
2X



COLUMN ASSEMBLY SUPPORTING A4
2X



COLUMN ASSEMBLY SUPPORTING A3
2X



COLUMN ASSEMBLY SUPPORTING A2
2X