



megamount REBEL

TYRE CHANGER
WITH *DYNAMIC*
LEVERLESS SYSTEM

DYNAMIC
LEVER
LESS

UP to
30"

BEAD
BREAKING
DISCS

BEAD
PUSHING
ARM





Latest generation super-automatic tyre changer tool with leverless system suitable for wheel diameters up to 30". The particular shape of the tool and the movement in two directions reduce the stress on the tyre and the risk of scratching the rim, allowing to work safely and without the use of any additional tools, with a subsequent reduction in time and effort.

megamount



**BEAD
PUSHING
ARM**

Additional bead pressing arm that moves together with the tyre to facilitate assembly operations in the case of UHP or Run-flat wheels



Functional and intuitive control console for optimal control of all work tools. Guarantees perfect ergonomics in movements



PATENTED contact-free dynamic leverless system

Rebel uses an absolutely innovative leverless assembly/disassembly system. The particular shape of the tool with two grippers and its movement in two directions (axial and radial) simplify the work as much as possible. The tool lowers to engage the bead with the front lever, closes to allow the rear lever to lock it and keep it in position and then moves away from the edge of the rim, following a radial movement. All without the need to exert pressure that could damage the tyre and avoiding any contact with the rim (contact-free).



Combined bead removal with discs

Combined bead removal thanks to the movement of the two disc arms. The lower disc is always aligned with the assembly/disassembly tool. The upper roller is always tangent to the rim centre. Dedicated pushbuttons allow having full control of the penetration progress of the discs, while the solidity of the frame in which the lower disc arm is located allows exerting more effective pressure when removing the bead of particularly difficult tyres.



Locking capacity up to 30"

Self-centring locking device with translational movement. The cast iron structure guarantees an extraordinary sturdiness, such as to withstand any stress without suffering any damage. The tightening is optimal on any type of rim up to 30" and ensures maximum safety when working

Motoinverter

Motor controlled by Motoinverter system with progressive variation of speed from 0 to 16 rpm. The inverter board is installed on the machine, away from the engine to overcome vibration and heat problems. Low power consumption at rest with the intelligent stand-by. High reliability and protection, with automatic alarm reset bringing the pedal to the resting position (no power outages required).



Pedal operated inflating device

Pedal-operated inflating system, manometer and CE-certified inflation pressure limiter (4.2 bar/60PSI).

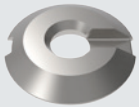


Standard accessories



Protections for self centering device, pin to work with reversed rim and plastic replacement head

Optional accessories



Light transport cone



Light transport adapter

Wheel lift

Extremely useful lift for lifting and centring even the heaviest wheel in the working position, ensuring perfect alignment between the centre of the rim and the centre of the self-centring device in every phase.

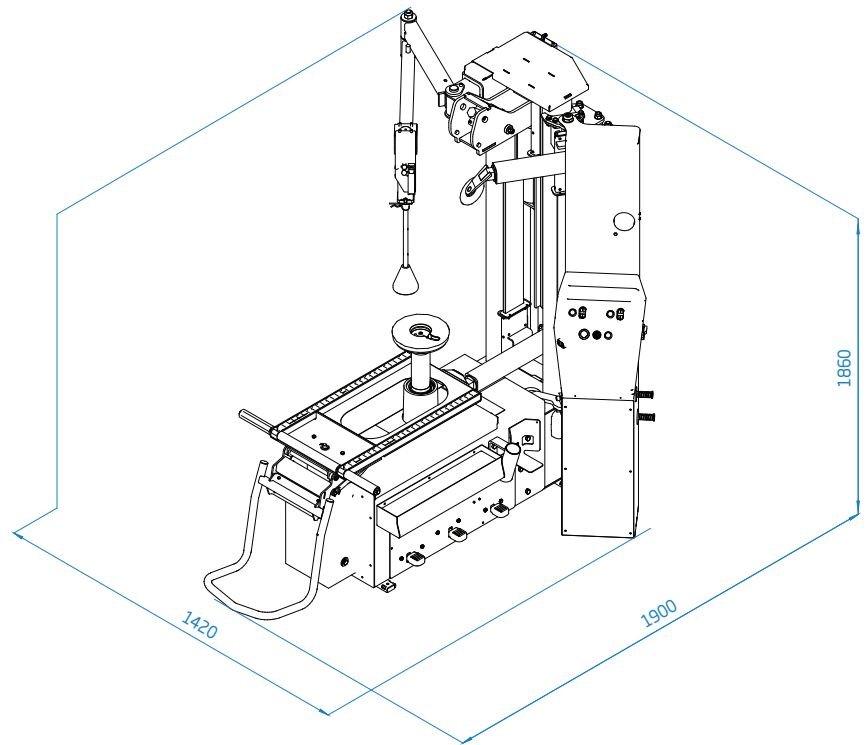
The operator controls the movement with a single pedal with continuous action, without any effort.



Kit intallatore



External air jet inflation device for tubeless tyres; it facilitates the quick beading of any wheel and can be fixed on the machine for greater ease of use



Technical Data

Clamping capacity	10" ÷ 30" (min ÷ max)
Max wheel diameter	1200 mm / 47"
Max wheel width	380 mm / 15"
Bead breaker force	12000N
1-Phase motor	1.5 kW (Inverter) 230V 50-60Hz
Turntable speed	0 - 16 rpm (1ph - Inverter)
Operating pressure	8 - 10 bar (116 - 145 psi)
Noise level	< 70 ± 3 dB (A)
Net weight	370 kg

WHEEL LIFT



HOFMANN MEGAPLAN GmbH
Hüttenstrasse 7 - 67550 Worms - Germany
T +49 (0)6242 913 6666 - hm-mail@hofmann-megaplan.com
www.hofmann-megaplan.com